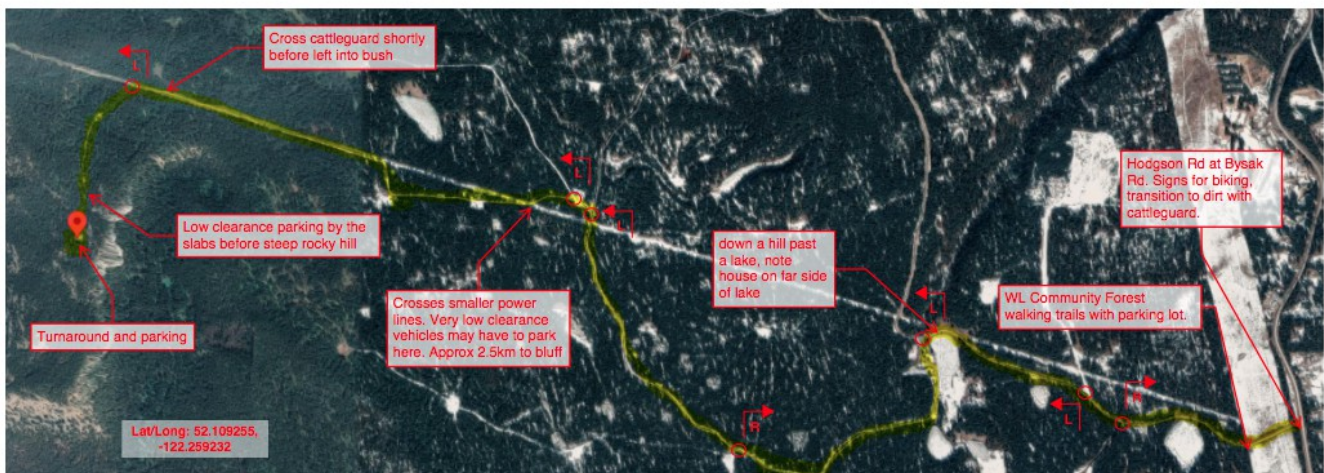


# Picture Directions to Esler

*Williams Lake, BC*

Pictures from Ekai J

1. Drive south on Hwy 97 to Williams Lake (~240km)
2. At the Hwy 20/97 junction continue straight through the lights onto Hwy 20
3. In about 4.1km turn right on Hodgson Rd.
4. In about 3.6 km turn right on a dirt road (Pictures below start here)
5. From the dirt road set the odometer at 0
6. Continue on gravel road for about 1.4 km and turn left (it will be past the second pond)
7. Continue on main dirt road, when odometer reads 3.7km curve left at fork.
8. The road will end at a grassy opening the odometer will read about 6.3km, crag is on the left.



Turn Right on dirt road:



Turn Left after second pond:



Curve Left at fork:





Obvious Left turn:



Parking:



